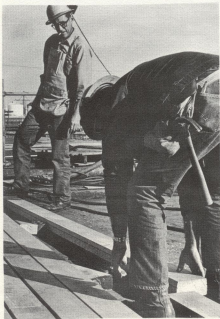


# Flight Deck



Above--next, lay in the new custom-fitted planks...

...pour on the liquid sealant, and bolt back down tightly.

Top photo, opposite page--Remove nuts holding planks down, then rip them up with a pneumatic hammer.

Bottom photo, opposite page--Once the seal between the planks and the deck is loosened with the hammer, apply leverage in the form of shovels to pry the old planks up.

