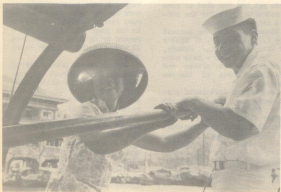




(ABOVE)  
SHUTTLE FERRY ALONGSIDE....One  
of the more popular modes of  
transportation between Benn  
and Hong Kong was the free  
ferry boat.

(LEFT)  
CHINESE NICKEL SNATCHER...Most  
of Benn's crew frequently used  
the walla-wallas as transpor-  
tation to and from the ship.

(BELOW)  
SAMPAK OPERATOR AND STRIKER...  
One of more than 4,000 sampans  
in Hong Kong waters that shut-  
tled visitors to and from one  
of the floating restaurants is  
partially propelled by one of  
Benn's crewmembers.



# Home

**K**

