



The Hiroshima Peace Memorial Museum contains many relics of the atomic disaster.

Hiroshima 1964

A split second after 8:15 a.m., 6 August 1945, 80,000 residents of Hiroshima were dead. Ninety per cent of the city lay in ruins.

The name Hiroshima still echoes in the canons of history, but since the disaster, it has risen out of the blackened and scarred ruins to its former position as a major port and manufacturing center; its streets are lined with modern buildings and bustling people keeping the city alive.

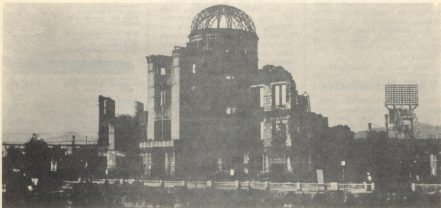
Some of the outstanding monuments in Hiroshima include Promotion Hall, which was the only concrete building left standing after the blast; and

Peace Hall, where the remains of 64,000 victims of the explosion are buried. On the area directly below "ground zero" a Peace Memorial Park has been erected in memory of the bomb's casualties and dead. The Park, very impressive in its stark simplicity, serves as a reminder of the horrors of atomic war, a "dwelling place for the conscience of the world."

Throughout the park are various monuments erected in reverence of those who perished. On one such monument, The Memorial Centaph, are inscribed the words "Rest peacefully. We will never repeat such an error."



After visiting the museum a sailor pauses, thinks, then moves on.



A grim reminder of the horrors of atomic war, the last remaining relic, Industrial Exhibition Hall.