

stops at the scenic bay where the beach scene from the movie "Love Is A Many Splendored Thing" was filmed. On the way home we stopped at the Blow Hole. Here, because of an unusual rock formation, a gysser is created whenever a wave hits the shore. We continued our homeward journey via the Pali Drive through the mountains which afforded a panoramic view of Honolulu and the eastern end of the Island.

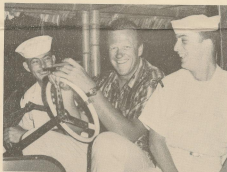
An historical tour of Pearl Harbor was also given daily. The high point of this tour was a visit to the memorial erected over the all but submerged wreckage of the battleship USS ARIZONA that lost almost her entire crew in the Japanese attack on Pearl Harbor on 7 December 1941.

Entertainment at considerable financial savings in comparison with civilian standards was afforded by the exceptional Armed Forces recreational facilities. Your sons, husbands and loved ones have had a wonderful opportunity to see this beautiful and enchanting island. I am confident many of their letters home will reflect these interesting and enjoyable hours ashore.

We will depart Hawaii for the fascinating Far Eastern ports of Sasebo, Subic, Yokosuka, Kobe and Hong Kong. However, recent news events from this troubled and unfortunate area of the world cause me to surmise that our duties in the Western Pacific may be demanding and tiring for our excellent crew and far different from this pleasant sojourn here in Honolulu, Hawaii.

Sincerely yours,

*Marvin E. Barnett*  
MARVIN E. BARNETT  
CAPTAIN, U.S. NAVY  
COMMANDING OFFICER



"Gunsmoke's" Marshall Dillon, actor James Arness is seen here driving two BENNINGTON crew members from the luau to the show at the Polynesian Center.