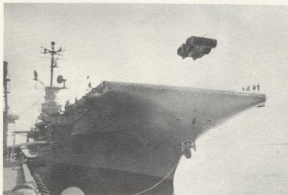
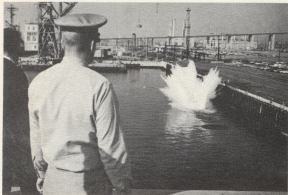


WEIGHTED SLED TESTS

BIG BENN'S CATAPULTS



BENN TESTS PORT CAT--The weighted sled nears the end of the port catapult (pix #1) and becomes airborne (pix #2). The splash in pix #3 shows a successful launch. A whaleboat will salvage the sled and another test will be conducted.



While Benn was tied up at Pier "E" in early January tests were made on her hydraulic catapults with the use of a dead weight.

In order to check the launching thrust of a carrier's catapults a weight is launched while the ship is in port. The sled is weighted down to match the weight of the carrier's embarked aircraft.

After the sled is launched a whaleboat and crew move in to salvage the floating sled. The sled is then lifted aboard and prepared for another test launch to repeat the cycle until observers are satisfied that the catapults are in good condition or they determine what needs to be corrected on them.

