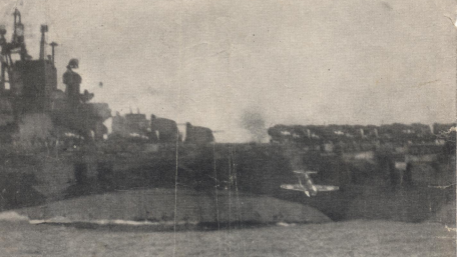


HARA-KIRI ON



BAT OUT OF HELL: Trailing smoke, a Jap suicide plane overshoots its target, an Essex-class carrier, by less than

Official U. S. Navy photographs
20 feet and dives into the Pacific. Japs have expended large numbers of planes in attempts to crash on our ships,



LAME DUCK: Jap pilot tries to get his limping Zero on a U. S. warship's deck. Instead, he plunged into the sea.



DEAD PIGEON: Both engines burning, this Jap bomber nosedives into the sea. A carrier's AA guns got her,