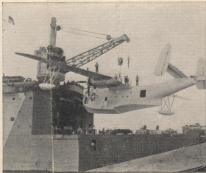


FLOATING DRYDOCK cradles a ship that has put into an advance base for repairs. The ship will be back in action weeks earlier than if it had to return to mainland for overhaul. Some floating drydocks are sent to bases in sections.



POWDER is taken on a battleship. Supply ship delivering it from advance base is alongside (right background).



SEAPLANE tender hoists aboard a PBM at an advance base. Spot repairs eliminate trips back to main bases.

Official U. S. Navy photographs